

# Pontiac MRC: Yours to Manage the Shoreline

Jean-François Ouellet, General Manager

819-771-5025 | [info@abv7.org](mailto:info@abv7.org)

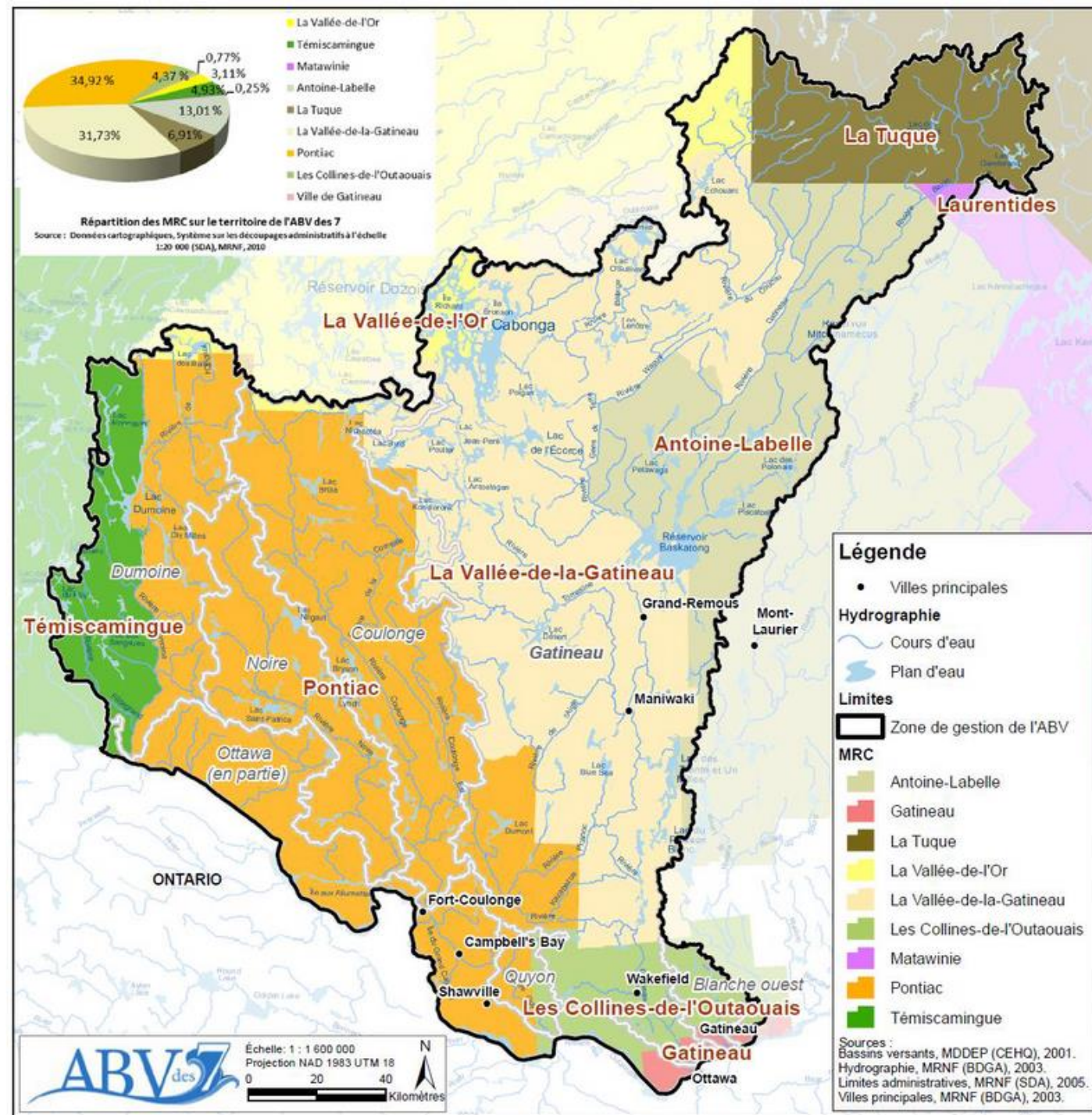
733 boulevard Saint-Joseph, bureau 430, Gatineau (QC) J8Y 4B6



**AGENCE DE  
BASSIN VERSANT  
DES 7**

## Yours to manage the quality of your water and living environments

- ▶ 5 specialists in stakeholder engagement, geomatics, limnology, and ecology.
- ▶ Our activities/services include:
  - ▶ Preventing water pollution
  - ▶ Monitoring water bodies
  - ▶ Protecting wetlands
  - ▶ Building community capacity
  - ▶ Fight against invasive species
  - ▶ Engaging and educating people





# 14,000 REASONS INSPIRED BY OUR 14K CITIZENS

A WORTHY COMMUNITY, STRONG AND COMMITTED, CUSTOMS AND CULTURES THAT COEXIST IN HARMONY



# Toward Resort Communities Close to Bodies of Water



## Détermination des sites de villégiature commerciale et communautaire sur le territoire public de l'Outaouais

2015-2020



### VERSION ADMINISTRATIVE ADMINISTRATIVE VERSION

#### Règlement # 65-99 modifié par :

Règlement # 82-2002 : affectation urbaine, Campbell's Bay  
Règlement # 87-2003 : affectation Centre local, Chichester  
Règlement # 88-2003 : affectation Urbaine, Shawville  
Règlement #137-2008 : affectation récréative, Mansfield-et-Pontefract

#### By-law # 65-99 amended by :

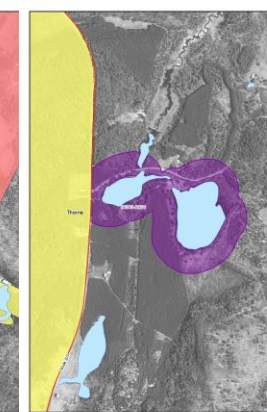
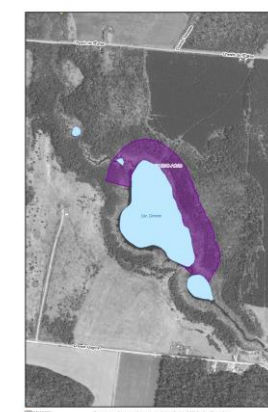
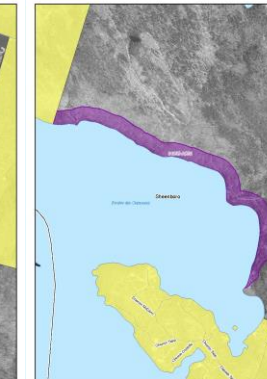
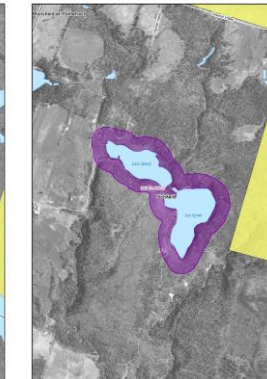
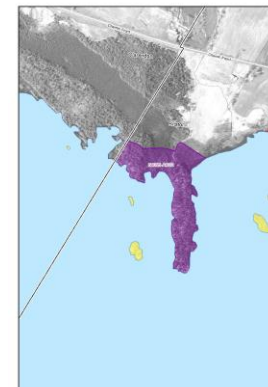
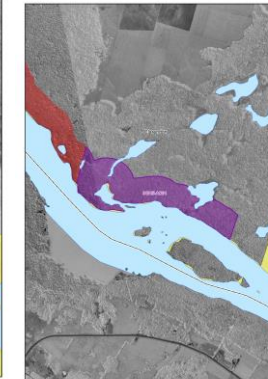
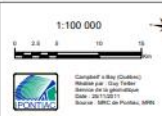
By-law # 82-2002 : Urban Land Use Designation, Campbell's Bay  
By-law # 87-2003 : Local Centre Land Use Designation, Chichester  
By-law # 88-2003 : Urban Land Use Designation, Shawville  
By-law #137-2008 : Recreational Land Use Designation, Mansfield-et-Pontefract

### Les grandes affectations du territoire

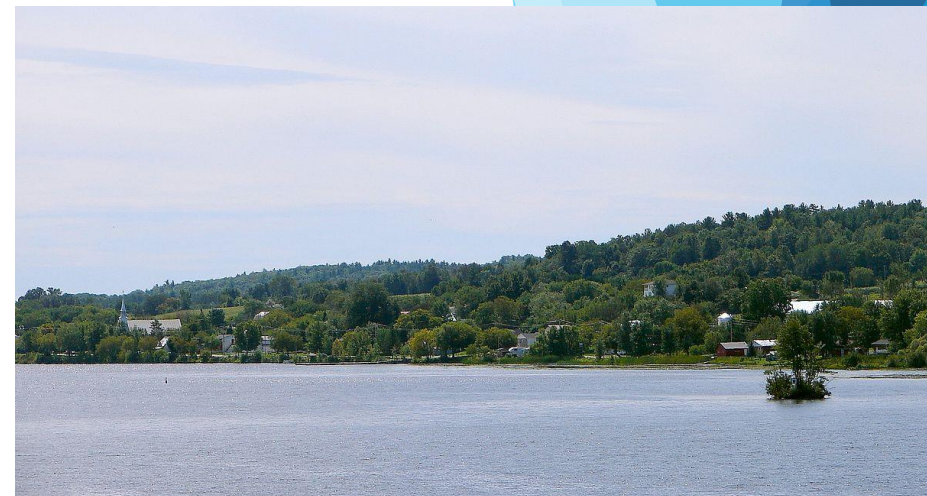
### Land Use Designations

#### Légende / Legend

- Agricole
- Agricolaire
- Centre intermédiaire
- Intermédiaire Centre
- Forestière
- Industrielle lourde
- Heavy Industry
- Centre local
- Local Centre
- Récréative
- Recreational
- Urbain
- Urban
- Agro-forestière
- Agro-forestry
- Territoire municipalisé
- Municipal Territory
- Territoire non organisé
- (affectation forestière)
- Unorganized territory
- (forestry Land Use Designation)
- Cycloparc PPJ
- (affectation récréative)
- PPJ Cycloparc
- (Recreational Land Use Designation)





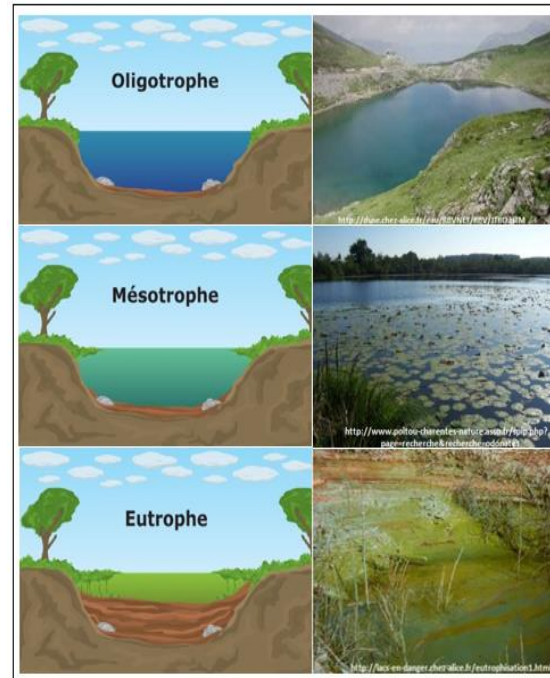




# Threats to the Communities Living Close to Water



Flooding



Lake Eutrophication



Detrimental or Invasive Species



*An example of  
Blue-Green Algae Bloom*

Sheenboro, August 2020

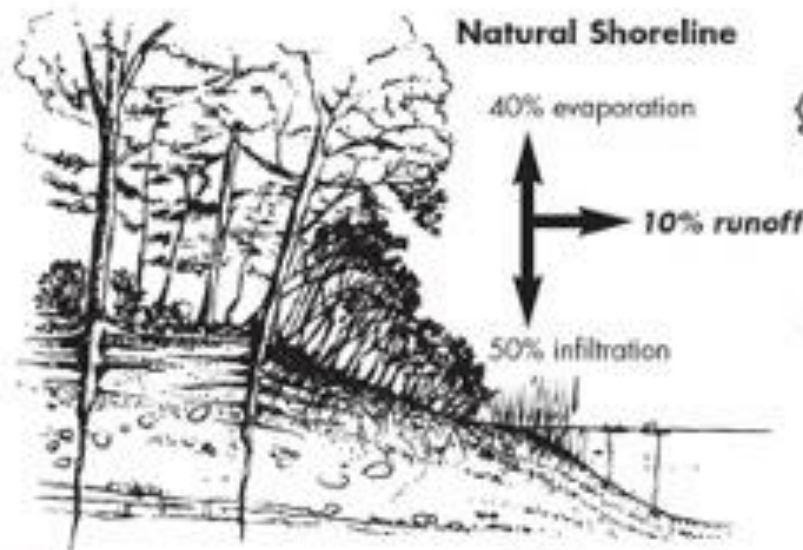




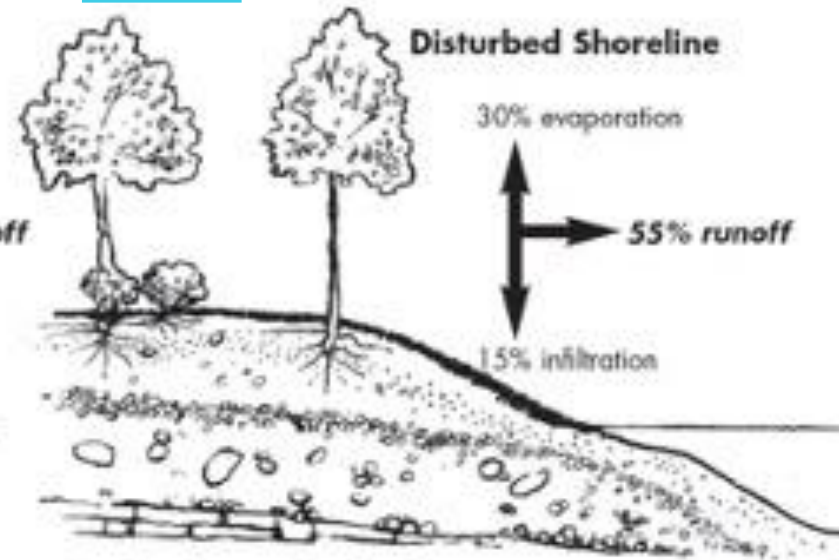
# What development for lakes?



## RAPPEL



Native vegetation protects water quality from polluted runoff, and helps soil absorb water.



Hard surfaces and reduced vegetation increase runoff and erosion potential, and decrease absorption by the soil.



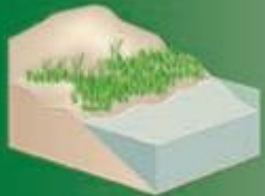
# What development for Ottawa River?

HOW **GREEN** OR GRAY SHOULD YOUR SHORELINE SOLUTION BE?

## GREEN - SOFTER TECHNIQUES

## GRAY - HARDER TECHNIQUES

### *Living Shorelines*



#### **VEGETATION ONLY -**

Provides a buffer to upland areas and breaks small waves. Suitable for low wave energy environments.



#### **EDGING -**

Added structure holds the toe of existing or vegetated slope in place. Suitable for most areas except high wave energy environments.



#### **SILLS -**

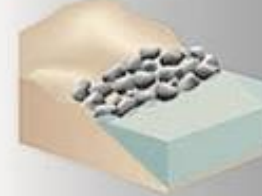
Parallel to vegetated shoreline, reduces wave energy, and prevents erosion. Suitable for most areas except high wave energy environments.



#### **BREAKWATER -**

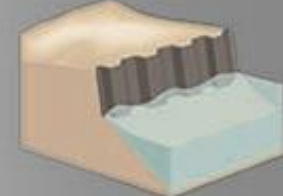
(vegetation optional) - Offshore structures intended to break waves, reducing the force of wave action, and encourage sediment accretion. Suitable for most areas.

### *Coastal Structures*



#### **REVETMENT -**

Lays over the slope of the shoreline and protects it from erosion and waves. Suitable for sites with existing hardened shoreline structures.



#### **BULKHEAD -**

Vertical wall parallel to the shoreline intended to hold soil in place. Suitable for high energy settings and sites with existing hard shoreline structures.



# What's next?

- ▶ We want you to protect your 14K reasons to stay from water threats.
- ▶ Yours to help with these concerns:
  - ▶ Individual Meeting with Municipalities to identify your **Needs** and get your **Solutions**
  - ▶ **Research Funding** to develop your Territory
  - ▶ **Free Expertise in Lakes and Rivers**



AGENCE DE  
BASSIN VERSANT  
DES 7



# Who We Are

ALUS, originally an acronym for Alternative Land Use Services, is an innovative community-developed and farmer-delivered program that produces, enhances and maintains **ecosystem services** on agricultural lands. Projects such as wetland restoration and enhancement, riparian buffers, shelterbelts, afforestation and native prairie grass restoration provide cleaner water and air, habitat, carbon sequestration and climate resiliency.



## Vision Statement

Sustaining agriculture, wildlife and natural spaces for communities and future generations.



## Mission Statement

ALUS helps farmers and ranchers build **nature-based solutions** on their land to sustain agriculture and **biodiversity** for the benefit of communities and future generations.

**Maria Jose Maezo**

15, Chemin de la  
Grande-Côte

Bureau 200

Saint-Eustache, QC

J7P 5L3

[mjmaezo@upa.qc.ca](mailto:mjmaezo@upa.qc.ca)

514-796-6395



**ALUS**